



www.waterislight.de

Wasserkraft-Turbine zur Stromerzeugung - Ein Projekt der Entwicklungszusammenarbeit

What is Pico-Hydro ?

...
„Medium“ 10-100 MW
...
„Mini“ 100kW-1MW
„Micro“ 5-100kW
„Pico“ < 5kW

Elektrical Power of a Turbine

= f (head * flow-rate * efficiency)
e.g. Head 2m
fIFwrate 30 Liter/sec
Efficiency 50%
will produce 300 W electrical power



How can you use 250 Watt ?

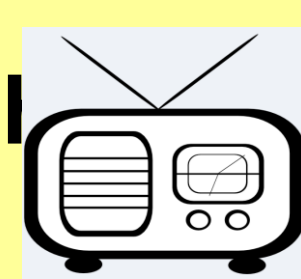
e.g. in a household of 2-3 families:

10 lamps (10 x LED, 8 Watt)



and

radio, TV and charging batteries for mobiles, flash

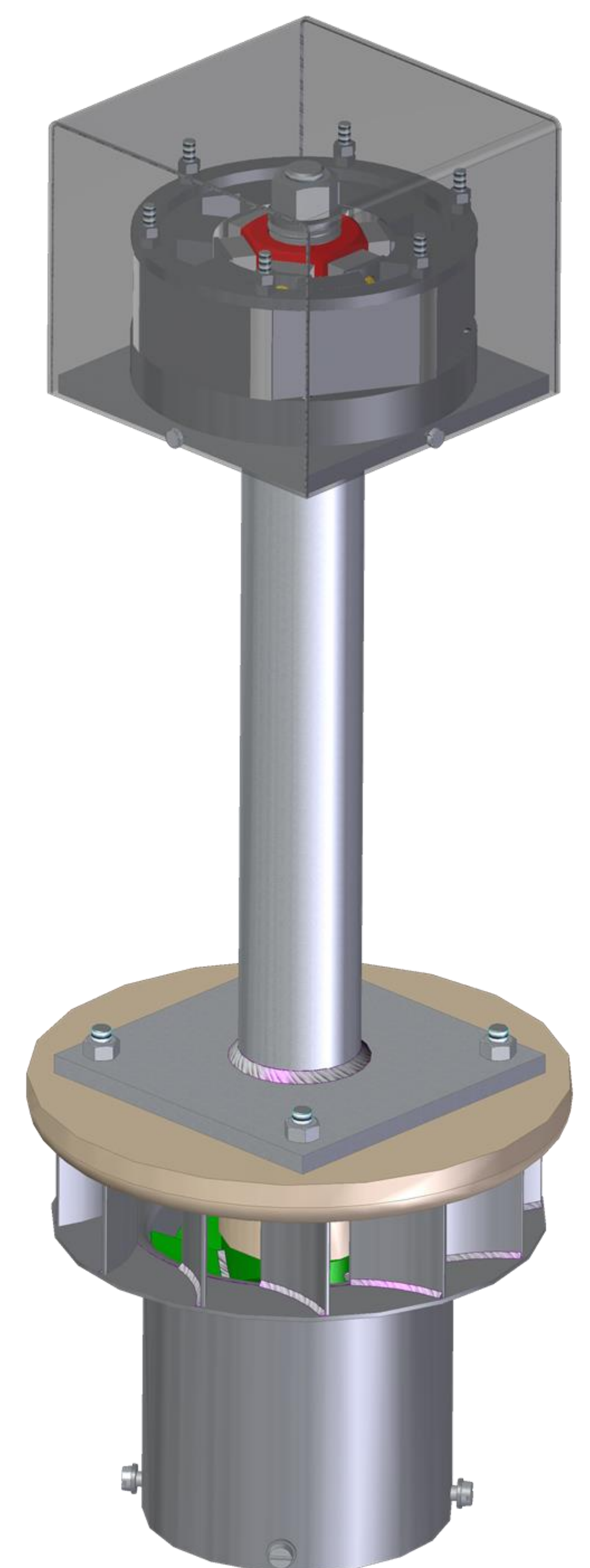
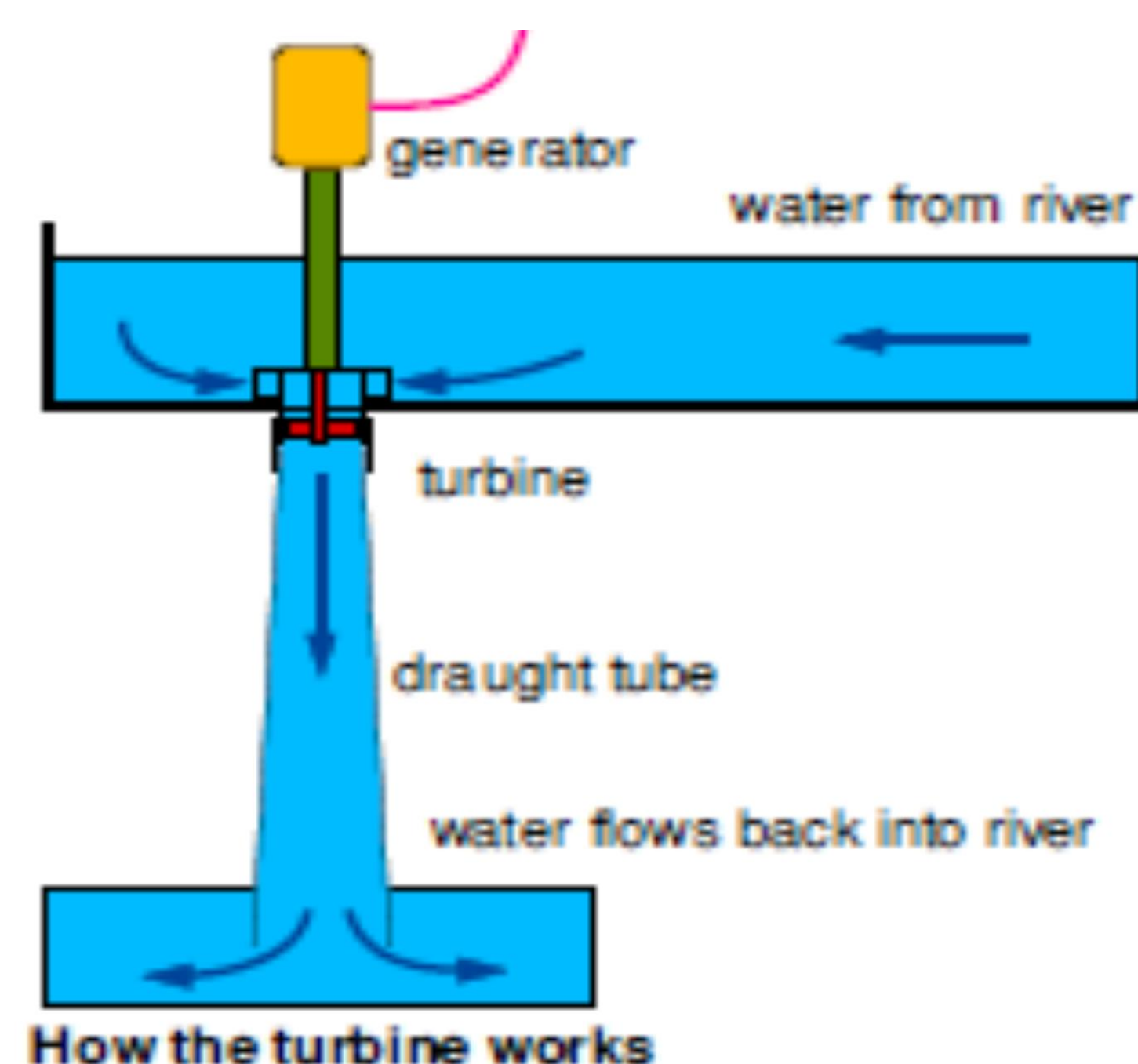


and

small fridge-box for food, me



Good thing: it provides energy day and night 24/7 ! No need for expensive batteries !



Highlights of the WIL250 Hydropower System

- Simple, robust design.
Made for teaching purposes in training centers
Handcraft-production
- No komplex machining neccessary
adaptable to local craft technologies
- Material can be procured for local source
- OpenSource:
Manual and drawing free available
- KnowHow-Transfer:
Empower people to manage their needs

